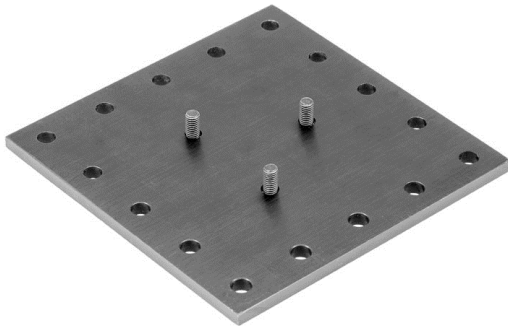


Tripod heads for mounting on perforated plates with M6 bores

In measurement laboratories, work is often carried out with tables having a regular, quadratic hole pattern, for example, with a M6 thread. For such worktables, FOBA has developed a plate BALFI with which SUPERBALL ball heads from FOBA (BALLA, BALLO) can be mounted. The ball head then serves as a vice or mount for all possible applications or sensors.



Top view of BALFI plate with screws for mounting the SUPERBALL.

Technical data:

- Hole spacing: 2.5 cm (0.98")
- Hole Ø: suitable for M6
- Plate size: 12 x 12 cm (4.7 x 4.7")
- Plate thickness: 5 mm (0.2")

In order that the BALFI plate can be screwed under the ball head, the base plate of the ball head must be equipped with the corresponding threaded bores, which FOBA is happy to provide.



The SUPERBALL ball head from FOBA can be screwed together with the BALFI plate onto any position of the worktable and serve as a tool holder or as a head for sensors.



BALLA ball head on a perforated plate with M6 threaded bores.



BALLA ball head with a customised quick-release plate. In addition to the standard plates (BALPU etc.), specific quick-release plates are also available upon request.

